

## ENGLISH LANGUAGE ARTS 20F



---

- **Grade 10: ELA Foundations (20F)**

---

### **Overview:**

Welcome to English Language Arts 20F! In this class, you will complete lessons, group work, writing, readings, and other informative methods of learning to develop your ELA skills. We will examine multiple perspectives and critical questions that will build upon our units. We will use Manitoba's ELA framework of learning to guide our learning through 6 strands of **reading, writing, speaking, listening, viewing, & representing**. These are the 6 steps required to learn ELA skills, enhance those skills, practice, and prepare for projects and exams, and how we approach our readings. Let's get into it:

### **Key Skills & Goals: (Main Manitoba Outcomes for ELA)**

1. Explore thoughts, ideas, feelings, and experiences
  2. Comprehend and respond personally and critically
  3. Manage ideas and information
  4. Enhance the clarity and artistry of communication
  5. Celebrate and build community
  6. Use language to explore and respond to texts
-

### What will be included?

- Traditional grading mixed with ungrading (rubrics, checklists...)
  - Self assessment
  - Projects & Tests
  - Portfolios
  - Assignments throughout each unit containing writing, reading, and responses expanded through specific genre, styles, and projects to meet ELA outcomes
- 

**Class work & Participation: 90%**

**Final Exam 10%**

*The weight of assignments will vary based on the number of outcomes met and the length of the assignments.*

---

#### Course Structure & Units:

ELA 20F will follow these units, but can be adjusted or changed at any time depending on our learning speed, student interests, text requirements, and provincial testing standards.

**Our units are as follows: (2-6 weeks per unit)** including test time preparation & practice where it falls under.

- 1. Poetry Unit (Silenced Voices) & Persuasive Writing**
- 2. Book clubs (Topic: Survival & Resilience)**
- 3. Shakespeare & Essay Writing**
- 4. Outdoor Learning Unit (Narrative reading & writing)**

**If time allows...**

- 5. Teacher Read Book - Survival Unit**
- 6. That time where english made history: research project**
- 7. Podcasts, film, music, & games - Technological Impacts (Research)**

## Classroom & School Guidelines:

---

### **1. We show respect for ourselves, each other, and our school.**

We use kind words, listen actively, and take care of our space.

### **2. We come prepared and ready to learn.**

We bring what we need and stay focused during class.

### **3. We use the hall pass responsibly.**

Only one person at a time, and only when necessary.

### **4. We commit to learning and completing our work.**

We do our best and support each other's success.

### **5. We listen and communicate with care.**

We take turns speaking and share ideas respectfully.

---



## How does English Language Arts help YOU?

### **1. Critical Thinking & Interpretation**

- ELA skill: Analyzing texts, themes, and perspectives.
- Life/other classes: Helps in history (evaluating sources), science (interpreting data), and life (making informed decisions).

### **2. Communication (Written & Oral)**

- ELA skill: Writing essays, crafting arguments, presenting ideas clearly.
- Life/other classes: Essential for workplace emails, public speaking, reports in science/social studies, and effective everyday communication.

### **3. Empathy & Perspective-Taking**

- ELA skill: Exploring characters, voices, and diverse experiences.
- Life/other classes: Builds teamwork, conflict resolution, cultural awareness, and better social relationships. This can lead to social change.

### **4. Creativity & Self-Expression**

- ELA skill: Writing poems, stories, or personal reflections.
- Life/other classes: Boosts innovation in projects, problem-solving in math/science, and confidence in personal identity.

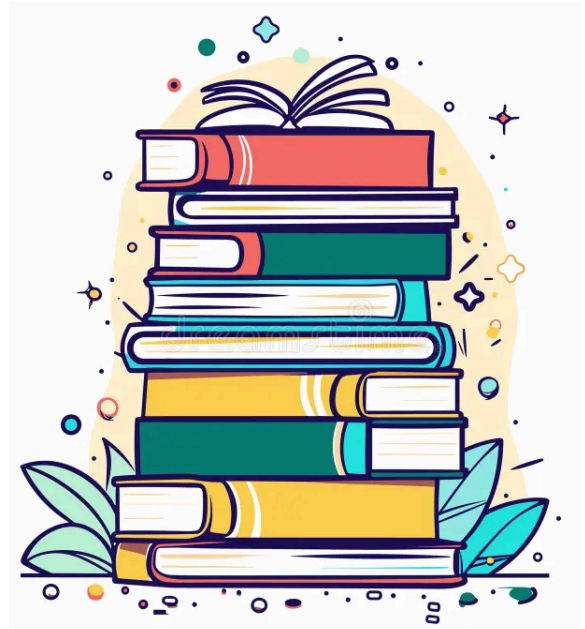
### **5. Information Literacy & Media Awareness**

- ELA skill: Evaluating sources, recognizing bias, and interpreting media messages.
- Life/other classes: Critical for research in all subjects, spotting misinformation online, and making responsible choices in daily life.

*It is important to know what we are learning, how it enhances your skills in this class, other classes, and in your daily lives. Everything we learn or do in class has meaning or an impact.\**

### Assignments & Activities:

- Quick writes
- Writing logs
- Reflections
- Quizzes
- Tests
- Research
- Diverse readings & perspectives
- Theories
- Projects
- Case Studies
- Guest Speaker(s)
- Readings (poems, short stories, books...)
- **& more!**





### Resources:

School  
Counsellors  
& more:



Your mental health is important. If you are ever in search of resources or to speak to someone I have provided some resources here. If you require further resources or assistance, feel free to reach out! All facets of your health matter, and you matter!

Classroom Expectations:	School policies:
<ul style="list-style-type: none"> <li>- Due dates &amp; Assignments Extensions*</li> <li>- Attendance is important!</li> <li>- Absences: Must be reported ASAP *make sure that you complete any missing assignments</li> <li>- Respect - Yourself &amp; Others + The school environment!</li> <li>- Get caught up - if you are missing, it is your job to catch up on classroom content and work. This will be posted on Teams, be available as paper copies, and if further information is necessary - make time to catch up with me!</li> </ul> <p><b>Provincial:</b> Cell phone guidelines*</p> <ul style="list-style-type: none"> <li>- <i>Must be kept in a designated area on silent</i></li> <li>- <i>Educational purposes when directed by the teacher</i></li> </ul>	<ul style="list-style-type: none"> <li>- Respect &amp; Guidelines</li> <li>- Hats &amp; Attire (shirts,bags*,headphones)</li> <li>- Hall passes</li> <li>- Doors (entrances) east &amp; west, locks</li> <li>- Scent free</li> <li>- Procedures (lock down*, stay in place, hold &amp; secure, fire drill...)</li> <li>- AI is plagiarism &amp; a violation of the Crocus Plains academic dishonesty policy</li> <li>- <b>Hallways &amp; designated spare areas</b></li> </ul> <p><b>Check TEAMS &amp; PowerSchool (students &amp; parents)*</b></p> <div data-bbox="812 1291 1388 1375">   </div> <p>Grades, attendance, assignments, documents...</p> <p><b>CONTACT:</b> Email: <a href="mailto:rae.victoria@bsd.ca">rae.victoria@bsd.ca</a> Send me a TEAMS message Crocus Plains Phone: 1 (204) 729-3900</p>