

Betty Gibson School

# Betty Gibson Handbook

Family & School



Learning and Growing Together

2025-2026

204-729-3965



[www.bsd.ca/schools/bettygibson](http://www.bsd.ca/schools/bettygibson)



# Our Mission, Vision & Learning Beliefs

## Our Vision

To be a centre of educational excellence, built on community partnerships, effective leadership and exemplary practices.



## Our Mission

We will provide a safe and inclusive environment to support learning at high levels.

## Our Learning Beliefs

In a world of difference, learning is a common ground.

Learning is a lifelong process, enhanced by a safe environment where risk taking is encouraged.

Learning is an active process, fueled by the learner's needs where that learner is given responsibility and choice.

Learning happens in different ways, at different rates and for different reasons.

A reciprocal relationship exists between learning and self-esteem.



Betty Gibson School

# Welcome to

## ★ Betty Gibson School

Betty Gibson is a K-8 school located in the heart of Brandon. It has an average enrollment of 350 students. The school has a strong commitment to work in partnership with families to ensure that each student is challenged academically within a safe, nurturing and respectful school environment.

### School Phone Numbers

Office Line: 204-729-3965

Attendance Line: 204-729-3967

If you need to get in touch with someone please phone the office line and the administrative assistant will connect you.

### School Hours

Morning Bell: 8:50 AM

Lunch: 11:40 AM

Afternoon Bell: 12:40 PM

School Ends: 3:30 PM

Morning Recess: 10:10-10:25 / 10:25 - 10:40

Afternoon Recess: 2:00 - 2:15 / 2:15 - 2:30

School staff greet the students at their assigned doors at entry times. For safety purposes, all outside doors remain locked at all times. Primary access or entry into the school building is always attainable through the front (12th Street) doors from 8:30 a.m. to 4:00 p.m.

Please ring the doorbell.

Betty Gibson School

# School Staff

**Mrs. Marcy Thomson - Principal**

**Mrs. Krista Adams - Vice-Principal**

**Mrs. Cerah Dube - Administrative Assistant**

**Mrs. Cheryl Battersby - Kindergarten**

**& Mrs. Ramandeep Sharma**

**Mrs. Heather Ramsey - Gr. 1**

**Ms. Brenda McDermid - Gr. 1**

**Ms. Ashley Sadler - Gr. 1/2**

**Mrs. Krista Mowatt - Gr. 1/2**

**& Ms. Angela Cross**

**Ms. Danielle Serruys - Gr. 2/3**

**Ms. Brooke Piche - Gr. 2/3**

**& Ms. Angela Wilson**

**Mr. Dylan Chase - Gr. 3/4**

**Ms. Cathy Watt-Gauthier - Gr. 3/4**

**Ms. Libby Dempsey - Gr. 4/5**

**Mrs. Sagree Mudaly - Gr. 4/5**

**Ms. Bobbee Morrisseau - Gr. 5/6**

**Ms. Jen Terasaki - Gr. 5/6**

**Ms. Leanna Baker - Gr. 6/7**

**Mr. Jess Carr - Gr. 7/8**

**Mr. Brett Farnsworth - Gr. 7/8**

**Mr. Kurtis Warkentin - Gr. 7/8**

**Ms. Brittany Desjarlais - Music**

**Mr. Steve Melnyk - Phys. Ed**

**& Mr. Josh Murray**

**Ms. Jenna Sambrook - Continuous Improvement & Academic Support**

**Ms. Kristen Welsh - Resource**

**& Ms. Chantalle Crepeele**

**Mrs. Kelly Walker - Social Worker**

**Mr. Karl McDaniel - Counsellor**

**& Mr. Geordie Lancaster**

**Mrs. Tarah Sveistrup - EAL**

**Mrs. Jodi Armour - Literacy Support**

**Mrs. Laura Bignell - HSL**

**Ms. Vanessa Pascal - BSSIP Coord.**

**Ms. Kelly Spurway - Community Coord.**

**Mr. Justin Gowans - Custodian**

**Ms. Maria Wilches - Custodial Assist.**

**& Mr. Clint Taylor**

**Educational Assistants:** Mrs. Betty Alas, Mrs. Diane Birch, Ms. Maria Bock, Ms. Laurissa Falloon, Mrs. Sarah Janzen, Mrs. Mandy Lawrence, Ms. Sharon Munroe, Mr. Davey Cook, Mrs. Monica Penner, Ms. Inna Shchuka, Mrs. Aiko Warkentin, Mrs. Amanda Taylor, Ms. Maria Vergara Valerio

Betty Gibson School

# School Information

## Keep Us Informed

New Phone/Change of Address/Changed Parent Work Number/New Daycare Arrangements? To assist us in keeping in contact with you, personal information that changes during the school year should be reported to the school.

## Absence Call Back System

In an effort to ensure the safety of Betty Gibson School students, the school operates a "call-back" system every day during the school year. When your child is going to be absent from school, please telephone, email, or send a note to the attendance line to advise the Home School Liaison. Where the parent has not called or sent a message to school to advise us that their child will be away from school, the Home-School Liaison will telephone the parent to make certain that the absence is with the parent's knowledge. Your cooperation in contacting the school prior to the school contacting you is appreciated.

**All students that are late must enter through the front doors of the school and sign in at the office so that we know they have arrived safely at school.**

## Newsletters

One of the goals of our school is to actively promote an open flow of communication between the home and school. An important part of that communication is the school newsletter which allows you to keep current on school functions and activities. Our newsletters are sent by email to parents/guardians and are also available on our website.

## Parent Council

An active Betty Gibson School Parent Council has been organized. This group acts as a liaison between the home and the school, provides information sessions for parents, and assists the school with a variety of activities from transportation for field trips to organizing food days and fund-raising activities. The council meets monthly and welcomes new members. If you are interested in being a part of our parent council, please e-mail the school at [bettygibson@bsd.ca](mailto:bettygibson@bsd.ca).



# School Information

## Allergies

Betty Gibson School is a **nut free** school. We ask your cooperation by not sending any snacks or lunches with your child containing nut or peanut products. Though it sounds simple, it means no peanut butter sandwiches or cookies, and no Nutella. It means you should read the labels of other foods like muffins, granola bars and cereals before you put them in your child's snack. If your child has eaten nuts or nut products at home for breakfast or lunch, please have them thoroughly wash their hands and face with soap and water before coming to school. We also have students and staff who have serious asthma/allergy difficulties. We would ask that students and adults in the school refrain from using strong scented perfumes, hairsprays, lotions, etc.

## Volunteers

Parents, guardians and community members interested in contributing to school activities are welcome. All volunteers of the Brandon School Division must have an current Criminal Record Checks and Child Abuse Check completed. Please contact the school office for information on completing these forms.

## Lost & Found

All lost and found items are kept in three large drawers located in the main hallway outside the main office. Students should check the drawers for their lost items. Found personal items such as keys, watches and jewelry are kept for safe keeping in the main office.

## Inclement Weather

When the weather is inclement (pouring rain, lightning storms, windchill below  $-27^{\circ}$  celsius), we will be holding indoor recess .



Betty Gibson School

# School Information

## Bicycles, Scooters & Skateboards

Any bikes at school should be locked and their serial number recorded at home. Bikes are not to be ridden on school property. The school carries no responsibility for damaged or missing bicycles. Students choosing to ride a bike should wear a helmet and must have a lock for their bike. Scooters are not to be brought to school. Skateboards cannot be ridden on school property or stored in the school.

## YMCA Before & After School Program

The Brandon Family YMCA is pleased to announce that the Before & After School program will continue at Betty Gibson School. The program runs directly in the school and operates 7:30-8:50 am and 3:30 -5:30 pm. Prices (monthly) are \$97.00 for the mornings and \$153.00 for the afternoons. Registration and payment forms can be located at the YMCA and may be dropped off at the YMCA office.

## Lunch Hour & Lunch Program

Students are expected to go home for lunch and not return until 12:35 at the earliest, unless they are enrolled in the YMCA lunch program. Those students involved in intramurals or special activities/clubs may stay for lunch only on the days those activities are scheduled. Lunch supervision will be provided for these students only. Please pack a nutritious lunch keeping in mind that students staying for lunch do not have access to a microwave.

The YMCA offers a supervised lunch program for students in Kindergarten through grade 6. Parents must complete a registration form at Member Services at the YMCA (231 8th St) before their child attends. Cost is: \$43.00 / month for First Child, \$33.00 / month for additional child/ren.



Betty Gibson School

# School Information

## Nutrition at Betty Gibson School

At Betty Gibson School, we believe that nutrition is foundational to supporting active, healthy, and engaged learners. We are grateful for government and non-profit grant funding, which allows us to provide breakfast, snacks, and supplemental lunch items to students without barriers, judgement, perceived need, or stigma. Our nutrition program is inclusive and responsive. We accommodate students with food allergies as well as religious and cultural dietary restrictions. All food items offered to students follow the Province of Manitoba's Moving Forward with School Nutrition Guidelines.

## Daily Access to Nutritious Food

Each morning, a snack bucket with a selection of fresh fruits, vegetables, and dairy products (including yogurt, cheese, and milk) vegetables, trail mix, raisins, cereals, granola bars, and frozen yogurt tubes. is delivered to each of our classrooms. Students are also welcome to access snack items in the office as classrooms. Students are also welcome to access snack items in the two student fridges in the hallway as needed throughout the day to support their nutritional needs. These snacks are available for students who may not have brought snacks from home on a given day.

## Breakfast Program

Our breakfast program is financially supported by Food for Thought. The breakfast program coordinator prepares food items that students can grab and take to their classrooms beginning at 8:30 a.m. Students are to enter at the east door if attending the breakfast program. Students have access to cereals, milk, fruits, and vegetables during the breakfast program. If a child comes to school after 9:00 a.m. and has not had breakfast, they are still welcome and encouraged to ask for breakfast. We will always provide them with a healthy breakfast.

If your child would like to participate in the breakfast program, a form must be completed and signed by a parent or guardian prior to participation. This form is required for accounting and reporting purposes, as Food for Thought is a non-profit organization that relies on donations from community partners and support from the Child Nutrition Council.



Betty Gibson School

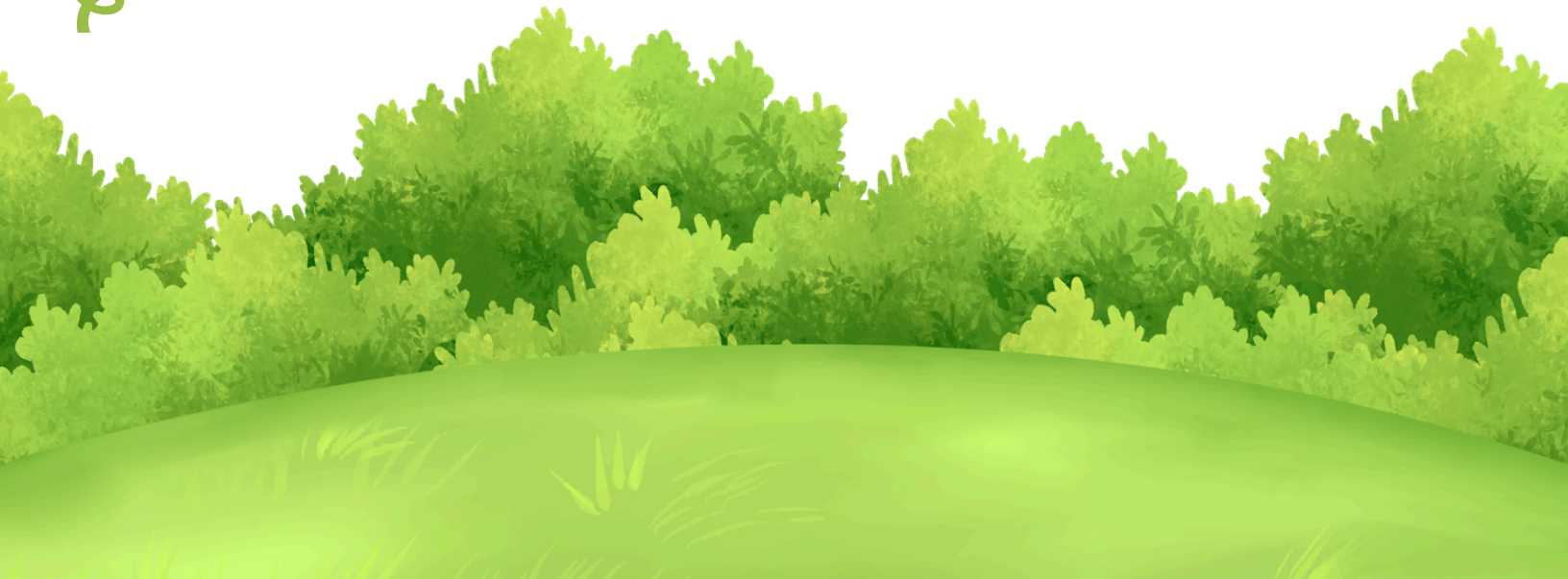
# School Information

## Nutrition Funding and Partnerships

Food purchased for student access is funded through a combination of government funding, Food for Thought, and the Child Nutrition Council. The Child Nutrition Council offers grants that schools may apply for to supplement government funding. Betty Gibson School applies for this grant annually to ensure we are able to provide sufficient fresh fruits and vegetables, so all students have access when they need a snack or wish to supplement their lunch.

## Important Note

There is no judgement placed on the foods families send with their children for snacks or lunches, provided that items do not contain allergens that have been identified within our school community.



Betty Gibson School

# Brandson School Division Code of Conduct



*"Accepting the Challenge"*

Betty Gibson School staff and students will behave in a respectful manner and comply with the code of conduct (BSD Code of Conduct Admin. Procedure 2005).

Expectations for behaviour help to promote and maintain a healthy, respectful, safe and productive learning environment. Following school rules helps the students interact positively and safely with others in their learning environment and helps them to develop responsibility, self-esteem and good citizenship.

Expected behaviours are taught and reinforced through:

- logical consequences
- social skills instruction
- problem solving and conflict resolution skills
- encouragement, praise, and positive reinforcement
- modeling appropriate behaviour
- class meetings





Betty Gibson School

# Brandon School Division

## Dress Code & Identification

What you need to know:



### Appropriate clothing:

- Hats, toques, bandanas and hoods must be removed in school
- Outerwear, large bags, backpacks etc. must be left in a locker or designated area unless immediately required for physical education
- Clothing must not display inappropriate words, phrases or images, or be revealing in nature and may not have accessories that are harmful to self or other



### Self Identification:

- Any student or person in a school building must identify themselves immediately when asked by a staff member. This includes through the intercom at the front door when requesting access to the school
- Visitors must always sign in at the office and wear nametags
- Face painting will only be allowed in conjunction with school programming



Disciplinary measures range from the student being asked to change clothing, a check through backpacks/bags, to receiving a suspension for non-compliance.

To ask questions about this policy, or to receive a copy of the policy in whole, please contact one of the school administrators.





Betty Gibson School

# Brandon School Division

## Accessibility

Brandon School Division (BSD) is committed to fostering an inclusive and barrier-free environment for all students, families, staff, and visitors. This commitment is grounded in the Accessibility for Manitobans Act (AMA), which helps guide the removal and prevention of barriers for people with disabilities.

### What Accessibility Means at BSD

- We recognize diversity in abilities and strive to ensure everyone can fully participate in programs, services, and facilities.
- We follow key accessibility standards outlined by the Manitoba government, including:
  - Accessible Customer Service
  - Accessible Employment
  - Accessible Information & Communication
  - Accessible Transportation
  - Accessible Design of Outdoor Public Spaces
- Our schools and facilities are designed to be accessible and welcoming for all.
- 

### Accessibility Supports

If you need information, services, or materials in an accessible format (for example: large print, alternate digital format, or communication support), you can request assistance by:

1. Online: Complete the [BSD Accessibility Request Form](#).
2. Email: [info@bsd.ca](mailto:info@bsd.ca) with your contact information, and describe the accessible service, format or support you need.
3. Phone: Call the Office of Communications at 204-729-0388.
4. In Person: Visit one of our facilities and speak with staff for assistance.

We will respond as quickly as possible and provide accessible formats at no extra charge.





Betty Gibson School

# Brandon School Division

## Accessibility

### Feedback and Continuous Improvement

We welcome feedback about accessibility and use it to improve services and reduce barriers. Feedback can be submitted by:

1. Online: Complete the [BSD Accessibility Feedback Form](#).
2. Email: [info@bsd.ca](mailto:info@bsd.ca) with your name, contact information, and details regarding the feedback.
3. Phone: Call the Office of Communications at 204-729-0388.
4. In Person: Visit one of our facilities and speak with staff for assistance.

### Accessibility Planning

- The Division has a multi-year [Accessibility Plan](#) that outlines ongoing efforts to improve access across all facilities.
- The Division also maintains various [Administrative Procedures](#) aimed at supporting fair and accessible access for all community members.

Visit the below to view more resources related to Accessibility and Brandon School Division:

- [Accessibility in Brandon School Division - Public Site](#)
- [Accessibility Hub - Portal View](#)
- [BSD Portal - Divisional Documents - Accessibility Plan - Portal View](#)

If you have any questions or concerns regarding accessibility within Brandon School Division, contact our office:

Brandon School Division

1031 - 6th Street, Brandon, MB R7A 4K5

Phone: 204-729-0388 | Email: [info@bsd.ca](mailto:info@bsd.ca)

