

CROCUS PLAINS REGIONAL SECONDARY SCHOOL COURSE OUTLINE

History of Canada

| 30 F

| Term 2

COURSE OVERVIEW

The intent of this course is to examine the historical development of Canada, with a focus on its political history. Yet, this is not only a course about political change, but also a course about ordinary people, how they lived and came to shape the modern Canada we all know today. Throughout the semester, students learn to use six different historical thinking concepts and apply them to course material. Using these concepts enable students to become actively engaged, critical thinkers within the field of history.

GRADING POLICY

Your grade will be based on the following categories:

- Term Work (Worksheets, Quizzes, Assignments, Projects, etc)
 - 80%
- Final Project
 - 20%

LATE WORK POLICY

Late evaluation assignments and projects will receive the mark of a NHIO (Not Handed In O), until the assignment is handed in on a new assigned date.

ABSENCES

When you have been absent from class, keep in mind that it is **your responsibility** to find out what you have missed and catch up on all the missed work. All assignments will be posted on **Teams** so please ensure you are checking regularly.

- Please have your parent/guardian call the school office at 204-729-3900 to acknowledge that your absence is excused.

ASSESSMENT GUIDELINES

- Assessment *for* learning (**formative assessment**): where assessment helps teachers gain insight into what students understand
- Assessment *as* learning (**formative assessment**): is characterized by students reflecting on their own learning and making adjustments so that they achieve deeper understanding.
- Assessment *of* learning (**summative assessment**): where assessment informs students, teachers and parents about student success.

UNITS OF STUDY

First Peoples, and
New France

British North
America

Becoming a
Sovereign Nation

Achievements and
Challenges

Contemporary
Canada

ACADEMIC HONESTY

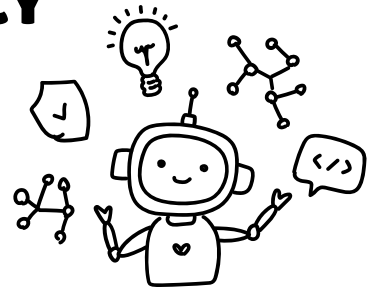
- It is expected that the work you hand in is your own from the current school semester/class. Students found copying from a classmate, another source (online or otherwise), or submits others ideas as their own, is plagiarizing, or cheating and will result in an automatic “zero” on the assignment.
- Dishonest use of AI as part of assessment completion will be treated as academic dishonesty.

PHONE POLICY

- School policy states that students require permission from their teacher before they can use their phones in the classroom. Phones will not be allowed during class unless permission is granted.
- Interesting to note, current studies demonstrate that cell phone use in schools is a contributing factor to declining mental health and academic resilience for our youth.

ARTIFICIAL INTELLIGENCE (AI) POLICY

You are encouraged to utilize AI tools in your school work to enhance research efficiency and deepen understanding. However, you must ensure that the use of AI is accompanied by critical evaluation, maintaining academic integrity by properly citing sources & acknowledging the limitations of AI-generated content.



CLASSROOM EXPECTATIONS

- **Commit** to making the classroom a safe space, including respecting the opinions, ideas, and culture of all others whether you agree with them or not
- **Respect** the right of all others to learn in an environment that is free of distractions
- **Use** only technology that is allowed in the class (NO personal electronic device are permitted in class)
- **Attend** class regularly, on time, and be prepared for all classes.
- **Be Productive** – Complete all work and turn it in on time.
- **Participate** to the best of your abilities in course/class activities.

CONTACT INFO

I am here to help you succeed! If you have questions or need extra support, feel free to reach out during class, after school, or via email. I encourage parents and guardians to contact me with any concerns or questions.

elder.cameron@bsd.ca

Teams: Elder.Cameron

LEARNING BEHAVIOURS

Learning Behaviours:

- **Personal management skills**
 - Uses class time effectively; works independently, completes homework and assignments on time.
- **Active participation in learning**
 - Participates in class activities, self-assesses, sets learning goals.
- **Social responsibility**
 - Works well with others; resolves conflicts appropriately, respects self, others and the environment.